



# **SOUTH AUSTRALIAN ECONOMIC INDICATORS**

EMBARGO: 11:30AM (CANBERRA TIME) WED 1 SEPT 1999

## **C O N T E N T S**

	<i>page</i>
Notes .....	2
 REVIEW	
South Australian overview .....	3
Selected features .....	4
 TABLES	
List of tables .....	5
Statistical summary .....	6
State summary .....	8
State accounts .....	9
International accounts .....	10
Consumption and investment .....	14
Production .....	16
Prices .....	20
Labour force and demography .....	21
Income .....	24
Financial markets .....	25
 ADDITIONAL INFORMATION	
Publications source index .....	26

- For more information about these and related statistics, contact Bethany Fenech on Adelaide 08 8237 7332, or refer to the back cover of this publication.

## NOTES

FORTHCOMING ISSUES	<table border="0"> <thead> <tr> <th style="text-align: left;"><i>ISSUE</i></th> <th style="text-align: left;"><i>RELEASE DATE</i></th> </tr> </thead> <tbody> <tr> <td>October 1999</td> <td>1 October 1999</td> </tr> <tr> <td>November 1999</td> <td>1 November 1999</td> </tr> <tr> <td>December 1999</td> <td>1 December 1999</td> </tr> <tr> <td>January 2000</td> <td>23 December 1999</td> </tr> <tr> <td>February 2000</td> <td>1 February 2000</td> </tr> <tr> <td>March 2000</td> <td>1 March 2000</td> </tr> </tbody> </table>	<i>ISSUE</i>	<i>RELEASE DATE</i>	October 1999	1 October 1999	November 1999	1 November 1999	December 1999	1 December 1999	January 2000	23 December 1999	February 2000	1 February 2000	March 2000	1 March 2000
<i>ISSUE</i>	<i>RELEASE DATE</i>														
October 1999	1 October 1999														
November 1999	1 November 1999														
December 1999	1 December 1999														
January 2000	23 December 1999														
February 2000	1 February 2000														
March 2000	1 March 2000														
ABOUT THIS PUBLICATION	<p><i>South Australian Economic Indicators</i> is a monthly publication which contains the latest available data at the time of preparation for a range of statistical series that have been identified as indicators of economic activity in this State. In a number of cases the figures presented are preliminary and subject to revision in subsequent issues.</p>														
CHANGES IN THIS ISSUE	<p>There are no changes in this issue.</p>														
SYMBOLS AND OTHER USAGES	<table border="0"> <tr> <td>n.a.</td> <td>not available</td> </tr> <tr> <td>n.y.a.</td> <td>not yet available</td> </tr> <tr> <td>*</td> <td>subject to sampling variability too high for most practical purposes</td> </tr> <tr> <td>. .</td> <td>not applicable</td> </tr> <tr> <td>0, 0.0</td> <td>nil, or rounded to zero</td> </tr> </table>	n.a.	not available	n.y.a.	not yet available	*	subject to sampling variability too high for most practical purposes	. .	not applicable	0, 0.0	nil, or rounded to zero				
n.a.	not available														
n.y.a.	not yet available														
*	subject to sampling variability too high for most practical purposes														
. .	not applicable														
0, 0.0	nil, or rounded to zero														
ROUNDING	<p>Where figures have been rounded, discrepancies may occur between sums of the component items and totals.</p>														
INFORMATION	<p>All data are original, unless otherwise stated. More detailed information on each series, including explanatory and technical notes, can be obtained from other Australian Bureau of Statistics publications or alternative data sources. To assist those seeking further information a source publication for each of the series has been documented in the statistical summary.</p>														

I. Crettenden  
Regional Director  
South Australia

## OVERVIEW

### INTERNATIONAL ACCOUNTS

The value of merchandise exports, where the final stage of production was in South Australia, was \$471.3m for June 1999. For 1998–99 exports were valued at \$5,301.0m. This represents an increase of 6.5% over 1997–98 (compared with a 3.3% fall for Australia as a whole). Increases were recorded for wine and vehicle exports during 1998–99, however the value of meat, wool and petroleum exports declined. Exports to the European Union and the Middle East also increased over the period, to account for 17.4% and 12.1% of total exports respectively. East Asia accounted for over one third (35.4%) of total exports.

The value of merchandise imports released from Customs control in South Australia was \$301.5m in June 1999. This was a decrease of 3.9% on June 1998.

### CONSUMPTION AND INVESTMENT

The trend estimate for retail turnover continued to decrease in June 1999. This was the fourth consecutive month of negative growth. Clothing and soft good retailing, and hospitality and services were the only categories with positive growth rates for the month; these categories have shown increases every month for the last five months. All other categories recorded negative growth, and have done so each month for the last five months. In original terms retail turnover for June 1999 was \$824.3m.

The trend estimate for new motor vehicle registrations for June 1999 was 4,122. This was 11.9% lower than the record high of 12 months ago (4,679).

The trend estimate at current prices for private new capital expenditure has continued to fall; the March quarter 1999 figure of \$563.0m was a decrease of 6.2% from December quarter 1998 and a decrease of 31.5% from the March quarter 1998.

### PRODUCTION

The trend for total dwelling units approved has increased 13.2% since November 1998 and is at its highest level since March 1995. The upward movement will continue unless there is a fall of 16.0% in the seasonally adjusted estimate next month.

### PRICES

The Consumer Price Index (all groups) in Adelaide increased 0.7% from the March quarter 1999 to be 123.6 in the June quarter 1999.

### LABOUR FORCE AND DEMOGRAPHY

The trend estimate of employed persons in South Australia has increased since July 1998. The estimate for July 1999 (661,800) is 3.6% higher than the level of 12 months ago (638,700).

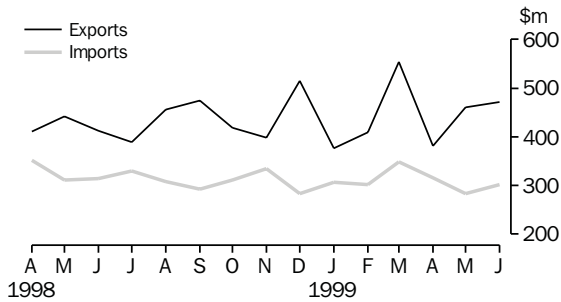
The trend estimate of the unemployment rate for South Australia has decreased since August 1998, reaching 8.1% in July 1999. A year earlier, the rate was higher at 10.1%.

### FINANCIAL MARKETS

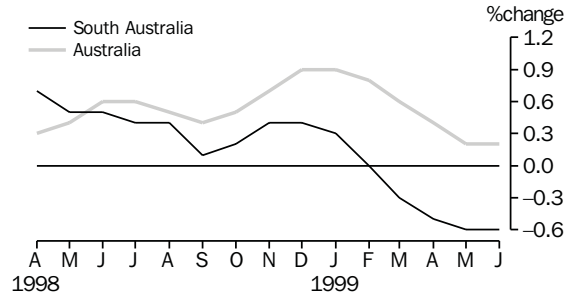
The June trend estimate for the value of new housing commitments (excluding alterations and additions) increased 2.0%, continuing the upward trend of the previous eight months. Seasonally adjusted, the value rose 2.6% to \$313.0m, 10.6% above the June 1998 figure.

## SELECTED FEATURES

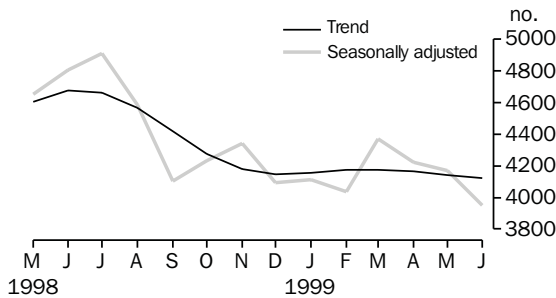
MERCHANDISE EXPORTS AND IMPORTS



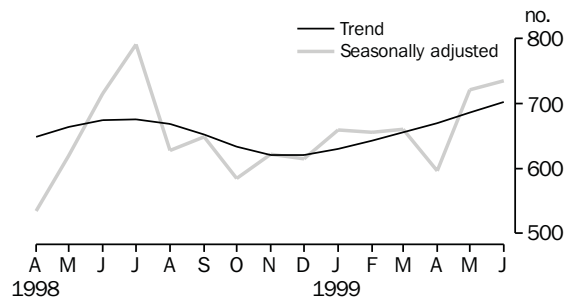
RETAIL TURNOVER: TREND



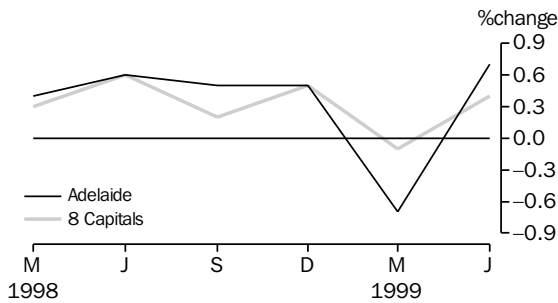
NEW MOTOR VEHICLE REGISTRATIONS



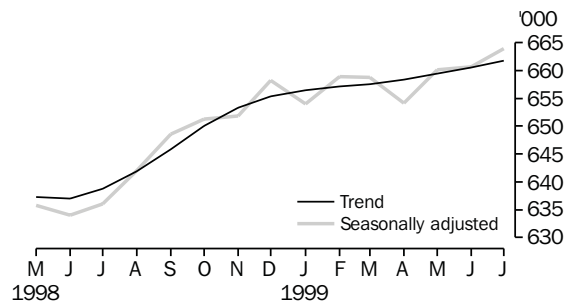
DWELLING UNITS APPROVED



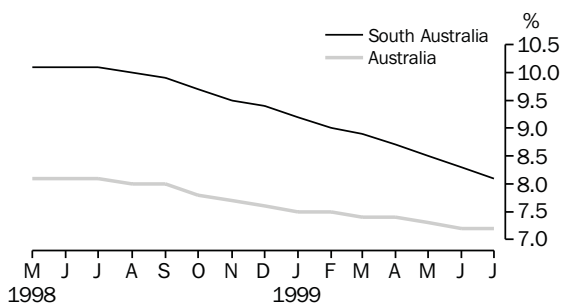
CONSUMER PRICE INDEX



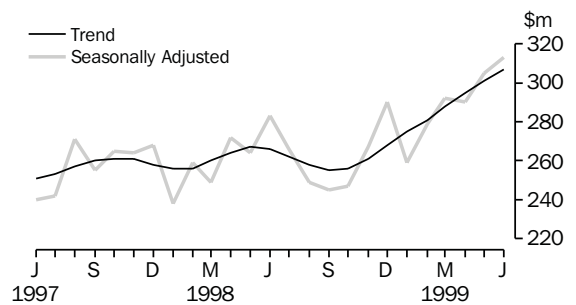
EMPLOYED PERSONS



UNEMPLOYMENT RATE: TREND



SECURED HOUSING FINANCE COMMITMENTS (a)



(a) Excludes alterations and additions. Includes refinancing.

## LIST OF TABLES

			Page
STATISTICAL SUMMARY	<b>1</b>	Statistical summary	6
	<b>2</b>	State summary	8
STATE ACCOUNTS	<b>3</b>	State accounts at current prices	9
	<b>4</b>	State accounts at chain volume measures	9
INTERNATIONAL ACCOUNTS	<b>5</b>	Merchandise exports, by selected commodity group	10
	<b>6</b>	Merchandise exports, by selected countries	11
	<b>7</b>	Merchandise exports, by industry of origin	12
	<b>8</b>	Merchandise imports, by selected commodity group	13
CONSUMPTION AND INVESTMENT	<b>9</b>	Turnover of retail establishments, by industry—trend	14
	<b>10</b>	New motor vehicle registrations, by type of vehicle	14
	<b>11</b>	Actual private new capital expenditure, by selected industry and type of asset	15
	<b>12</b>	Tourist accommodation	15
PRODUCTION	<b>13</b>	Building approvals	16
	<b>14</b>	Building commencements	17
	<b>15</b>	Value of building work done and completed during period	18
	<b>16</b>	Production, livestock products and selected commodities	19
PRICES	<b>17</b>	Consumer price index, by group—Adelaide	20
LABOUR FORCE AND DEMOGRAPHY	<b>18</b>	Estimated resident population and components of population change	21
	<b>19</b>	Births, deaths, marriages and divorces	21
	<b>20</b>	Civilian labour force status	22
	<b>21</b>	Civilian labour force, unemployment and participation rates	23
INCOME	<b>22</b>	Average weekly earnings of employees	24
FINANCIAL MARKETS	<b>23</b>	Secured housing finance commitments	25
	<b>24</b>	Finance commitments	25

Indicator	Period	South Australia			Australia			SA as a % of Aust.	Source index
		Number	% change from		Number	% change from			
			Previous period	Same period previous year		Previous period	Same period previous year		
<b>State accounts</b>									
Domestic final demand									
Current prices trend (\$m)	Mar qtr 99	10 361	0.5	2.1	151 712	1.5	6.0	6.8	(1)
Chain volume measures trend (\$m)	Mar qtr 99	10 035	0.2	0.4	146 690	1.1	4.2	6.8	(1)
Private final consumption expenditure									
Current prices trend (\$m)	Mar qtr 99	6 473	1.1	5.6	89 533	1.9	6.8	7.2	(1)
Chain volume measures trend (\$m)	Mar qtr 99	6 278	0.7	1.6	86 525	1.5	5.0	7.3	(1)
Private gross fixed capital formation									
Current prices trend (\$m)	Mar qtr 99	1 497	-1.8	-4.8	28 492	1.4	2.9	5.3	(1)
Chain volume measures trend (\$m)	Mar qtr 99	1 444	-2.0	-5.0	27 855	1.3	2.2	5.2	(1)
Compensation of employees									
Current prices trend (\$m)	Mar qtr 99	4 865	1.3	2.7	72 483	1.3	6.6	6.7	(1)
<b>International accounts</b>									
Exports (\$m)	Jun 99	471.3	2.5	14.2	6 533.0	-1.3	-10.1	7.2	(2)
Imports (\$m)	Jun 99	301.5	6.4	-3.9	8 141.6	5.0	-3.8	3.7	(2)
<b>Consumption and investment</b>									
Retail turnover									
Current prices original (\$m)	Jun 99	824.3	-3.2	1.1	11 556.4	-2.7	7.8	7.1	(3)
Current prices trend (\$m)	Jun 99	874.2	-0.6	0.3	12 243.2	0.2	6.9	7.1	(3)
1996-97 chain volume measures (\$m)	Jun qtr 99	2 458.4	-1.5	-1.8	34 265.0	1.7	5.0	7.2	(3)
New motor vehicle registrations									
Original (no.)	Jun 99	4 695	18.4	-18.5	79 507	24.4	-9.7	5.9	(4)
Trend (no.)	Jun 99	4 122	-0.5	-11.9	65 735	0.0	-4.3	6.3	(4)
Private new capital expenditure									
Current prices original (\$m)	Mar qtr 99	507	-23.7	-29.7	10 522	-12.0	2.1	4.8	(5)
Current prices trend (\$m)	Mar qtr 99	563	-6.2	-31.5	11 579	-0.7	-1.9	4.9	(5)
Private new capital expenditure (\$m)	1997-98	3 193	..	23.8	46 220	..	5.4	6.9	(5)
Takings, licensed hotels, motels, guest houses and apartments with facilities (\$m)									
	Mar qtr 99	45.5	-8.7	3.4	1 003.1	-3.8	5.0	4.5	(6)
<b>Production</b>									
Dwelling unit approvals									
Original (no.)	Jun 99	845	23.7	4.3	14 154	3.8	-2.7	6.0	(7)
Trend (no.)	Jun 99	702	2.3	4.3	13 134	0.8	-0.5	5.3	(7)
Dwelling units commenced (no.)	Mar qtr 99	1 636	-16.7	-0.7	33 680	-9.5	-4.3	4.9	(8a)
Value of non-residential building approvals (\$m)									
	Jun 99	26.5	-50.3	-27.4	948.6	-2.6	-22.6	2.8	(7)
Value of total building activity									
Commenced (\$m)	Mar qtr 99	433.6	8.3	52.7	7 450.0	-11.1	-7.6	5.8	(8)
Work done (\$m)	Mar qtr 99	335.0	-14.2	1.4	7 979.2	-15.3	5.3	4.2	(8)
Work yet to be done (\$m)	Mar qtr 99	440.4	32.1	47.0	12 941.1	-0.5	-1.4	3.4	(8)
Value of engineering construction work done (\$m)									
	Mar qtr 99	218.8	-10.6	-28.0	4 324.1	-6.8	-2.0	5.1	(9)
Manufacturing production									
Red meat (tonnes)	Jun qtr 99	43 029	-5.0	-8.1	736 908	0.3	0.4	5.8	(11)
Mineral exploration expenditure (other than for petroleum) (\$m)									
	Mar qtr 99	7.6	-14.6	-17.4	165.9	-30.8	-24.7	4.6	(12)

Indicator	Period	South Australia			Australia			SA as a % of Aust.	Source index
		Number	% change from		Number	% change from			
			Previous period	Same period previous year		Previous period	Same period previous year		
<b>Prices(a)</b>									
CPI—All groups (index no.)	Jun qtr 99	123.6	0.7	1.0	122.3	0.4	1.1	..	(13)
Price index of materials used in house building (index no.)	Jun qtr 99	125.2	0.1	0.9	119.2	-0.3	0.2	..	(14)
Price index of materials used in building other than houses (index no.)	Jun qtr 99	115.6	0.0	0.0	115.4	0.2	0.8	..	(15)
Price index of established houses (index no.)	Mar qtr 99	113.7	0.6	-0.3	131.3	1.8	5.7	..	(16)
Price index of project homes (index no.)	Mar qtr 99	117.9	1.5	3.7	113.8	1.3	3.1	..	(16)
<b>Labour force and demography</b>									
Population (resident at end qtr) ('000)	Dec qtr 98	1 490.4	0.1	0.5	18 871.8	0.3	1.3	7.9	(17)
Short-term overseas visitor arrivals (no.)	May 99	6 665	-7.3	35.1	298 133	-10.8	5.2	2.2	(21)
Short-term resident departures (no.)	May 99	14 335	6.6	2.0	262 379	7.4	-3.8	5.5	(21)
Labour force									
Original ('000)	Jul 99	717.9	-0.2	1.9	9 448.4	0.1	0.9	7.6	(18)
Trend ('000)	Jul 99	720.3	0.0	1.4	9 448.6	0.1	0.8	7.6	(18)
Employed persons									
Original ('000)	Jul 99	663.5	0.0	4.4	8 824.4	0.4	2.2	7.5	(18)
Trend ('000)	Jul 99	661.8	0.2	3.6	8 771.1	0.2	1.8	7.5	(18)
Participation rate									
Original(b) (%)	Jul 99	59.9	-0.2	0.6	63.0	0.0	-0.4	..	(18)
Trend(b) (%)	Jul 99	60.1	-0.1	0.3	63.0	0.0	-0.4	..	(18)
Unemployment rate									
Original(b) (%)	Jul 99	7.6	-0.2	-2.2	6.6	-0.3	-1.1	115.2	(18)
Trend(b) (%)	Jul 99	8.1	-0.2	-2.0	7.2	0.0	-0.9	112.5	(18)
Job vacancies ('000)	May 99	3.5	-16.4	30.4	71.1	6.9	-2.9	4.9	(19)
Average weekly overtime per employee working overtime (hours)	May 99	5.75	0.2	3.5	7.13	0.3	6.1	..	(19)
Industrial disputes ('000 working days lost)	May 99	0.9	800	-50.0	16.0	-43.1	-83.4	5.6	(20)
<b>Income</b>									
Average weekly earnings (full-time adults; ordinary time)									
Original (\$)	May 99	699.70	0.0	2.9	750.80	0.8	3.3	..	(22)
Trend (\$)	May 99	699.40	-0.2	2.1	749.40	0.6	2.9	..	(22)
Wage cost index (total hourly rate excluding bonuses)(c) (index no.)	Mar qtr 99	104.6	0.8	3.1	104.8	0.9	3.0	..	(23)
<b>Financial markets</b>									
Secured housing finance(d) (\$m)	June 99	336.0	11.6	9.4	6 255.0	5.0	21.2	5.4	(24)
Finance commitments									
Personal (\$m)	June 99	305.6	14.1	14.9	4 800.6	15.0	23.7	6.4	(25)
Commercial (\$m)	Jun 99	741.4	56.2	-4.9	17 821.4	40.7	9.0	4.2	(25)
Lease (\$m)	Jun 99	39.9	1.5	6.5	115.7	-86.6	-0.5	34.5	(25)
Interest rates									
Banks new housing loans(b) (%)	Jul 99	..	..	..	6.55	0.05	-0.15	..	(26)
Bank loans—small, medium business(b)(e) (%)	Jul 99	..	..	..	7.45	0.00	-0.25	..	(26)
Bank loans—large business(b) (%)	Jul 99	..	..	..	7.95	0.00	-0.10	..	(26)

(a) Base year of each index 1989-90=100.

(b) Change is shown in terms of percentage points.

(c) Base year of index Sep 1997=100.

(d) Excludes alterations and additions. Includes refinancing.

(e) Rate for business loans over \$50,000.

## 2

## STATE SUMMARY

<i>Indicator</i>	<i>Period</i>	<i>NSW</i>	<i>Vic.</i>	<i>Qld</i>	<i>SA</i>	<i>WA</i>	<i>Tas.</i>	<i>NT</i>	<i>ACT</i>	<i>Source index</i>
SELECTED INDICATORS										
CPI—All groups(a) (index no.)	Jun qtr 99	123.0	121.5	123.1	123.6	120.8	122.5	122.7	121.5	(13)
Participation rate trend (%)	Jul 99	61.7	63.0	64.9	60.1	65.8	58.6	69.5	71.3	(18)
Unemployment rate trend (%)	Jul 99	6.3	7.6	8.1	8.1	6.5	9.4	4.3	5.7	(18)
Average weekly earnings (full-time adults; ordinary time) trend (\$)	May 99	792.70	734.90	703.60	699.40	750.90	696.30	752.30	836.80	(22)
SELECTED INDICATORS PER HEAD OF POPULATION(b)										
State final demand										
Chain volume measures trend (\$'000)	Mar qtr 99	7.9	7.7	7.5	6.7	7.8	6.4	11.3	14.7	(1)
Retail turnover										
Current prices original (\$)	Jun 99	625.3	602.3	627.9	553.1	601.7	550.8	710.1	712.3	(3)
Current prices trend (\$)	Jun 99	665.6	636.3	657.2	586.5	645.8	584.4	704.9	756.0	(3)
New motor vehicle registrations trend (no. per '000 population)	Jun 99	3.6	3.8	3.2	2.8	3.7	2.6	3.7	3.7	(4)
Private new capital expenditure										
Current prices trend (\$)	Mar qtr 99	588.3	622.8	619.5	377.7	896.7	246.2	2 314.8	317.5	(5)
Dwelling unit approvals										
Original (no. per '000 population)	Jun 99	0.723	0.706	0.742	0.567	1.291	0.187	0.941	0.460	(7)
Trend (no. per '000 population)	Jun 99	0.683	0.734	0.661	0.471	1.031	0.223	0.826	0.499	(7)
Secured housing finance(c) (\$)	Jun 99	420.1	307.7	246.2	225.4	386.4	131.6	276.9	346.6	(24)
PERCENTAGE CHANGE FROM PREVIOUS PERIOD										
State final demand										
Chain volume measures trend (%)	Mar qtr 99	1.5	0.7	1.9	0.2	-1.4	0.8	0.7	0.8	(1)
Retail turnover										
Current prices original (%)	Jun 99	-3.9	-2.3	0.2	-3.2	-4.9	-1.7	1.9	-5.2	(3)
Current prices trend (%)	Jun 99	0.1	0.7	0.0	-0.6	-0.3	-0.2	0.6	0.2	(3)
New motor vehicle registrations trend (%)	Jun 99	0.5	0.1	-1.5	-0.5	1.4	-1.5	-3.3	-1.0	(4)
Private new capital expenditure										
Current prices trend (%)	Mar qtr 99	1.5	1.2	8.6	-6.2	-10.5	-3.3	-4.9	2.1	(5)
Dwelling unit approvals										
Original (%)	Jun 99	-3.0	-8.3	15.2	23.7	22.9	-7.4	45.2	-22.4	(7)
Trend (%)	Jun 99	1.0	-0.9	-0.3	2.3	3.3	-3.5	1.3	-5.2	(7)
CPI—All groups (%)	Jun qtr 99	0.3	0.4	0.2	0.7	0.8	0.3	0.5	0.1	(13)
Participation rate trend(d) (%)	Jul 99	0.0	0.1	-0.1	-0.1	-0.1	0.0	-0.9	0.1	(18)
Unemployment rate trend(d) (%)	Jul 99	-0.2	-0.1	0.0	-0.2	-0.1	-0.3	0.0	-0.1	(18)
Average weekly earnings (full-time adults; ordinary time) trend (%)	May 99	1.3	0.2	0.5	-0.2	0.4	-0.2	0.1	-0.7	(22)
Secured housing finance (%)	Jun 99	6.3	3.9	7.5	11.6	1.1	-18.4	0.0	-0.9	(24)
(a) Base year of index 1989-90 = 100.										
(b) The latest quarterly estimate of Australian resident population has been used to calculate ratios for subsequent periods.										
(c) Excludes alterations and additions. Includes refinancing.										
(d) Change is shown in terms of percentage points.										



### 3

#### STATE ACCOUNTS AT CURRENT PRICES

Period	Final consumption expenditure		Gross fixed capital formation		State final demand	Gross State product (I)	Compensation of employees
	Households	General government	Private	Public			
ANNUAL (\$m)							
<b>1995-96</b>	22 617	7 433	5 176	1 185	36 411	35 928	17 518
<b>1996-97</b>	22 920	7 477	5 772	1 274	37 444	36 434	18 140
<b>1997-98</b>	24 294	7 882	6 675	1 286	40 138	38 966	18 902
QUARTERLY, TREND (\$m)							
<b>1997-98</b>							
December	6 030	1 982	1 686	335	10 033	n.a.	4 730
March	6 129	1 988	1 730	302	10 149	n.a.	4 737
June	6 228	2 001	1 700	286	10 215	n.a.	4 727
<b>1998-99</b>							
September	6 320	2 024	1 602	314	10 261	n.a.	4 750
December	6 400	2 048	1 525	339	10 312	n.a.	4 803
March	6 473	2 064	1 497	336	10 361	n.a.	4 865

Source: Australian National Accounts: Quarterly State Details (Cat. no. 5206.0.40.001), and Australian National Accounts: State Accounts (Cat. no. 5220.0).

### 4

#### STATE ACCOUNTS AT CHAIN VOLUME MEASURES(a)

Period	Final consumption expenditure		Gross fixed capital formation		State final demand	Gross State product (I)
	Households	General government	Private	Public		
ANNUAL (\$m)						
<b>1995-96</b>	22 905	7 514	4 967	1 162	36 518	35 891
<b>1996-97</b>	22 920	7 477	5 772	1 273	37 444	36 434
<b>1997-98</b>	24 003	7 788	6 652	1 283	39 726	38 573
QUARTERLY, TREND (\$m)						
<b>1997-98</b>						
December	5 973	1 962	1 676	328	9 942	n.a.
March	6 044	1 956	1 696	296	9 993	n.a.
June	6 115	1 956	1 650	280	9 999	n.a.
<b>1998-99</b>						
September	6 182	1 968	1 550	307	10 001	n.a.
December	6 237	1 984	1 473	334	10 017	n.a.
March	6 278	1 993	1 444	333	10 035	n.a.

(a) Reference year for chain volume measures is 1996-97.

Source: Australian National Accounts: Quarterly State Details (Cat. no. 5206.0.40.001), and Australian National Accounts: State Accounts (Cat. no. 5220.0).

## 5

## MERCHANDISE EXPORTS, BY SELECTED COMMODITY GROUP(a)

<i>Period</i>	<i>Meat and meat preparations</i>	<i>Cereals and cereal preparations</i>	<i>Wine</i>	<i>Wool and sheepskins</i>	<i>Machinery</i>	<i>Metals and metal manufactures</i>	<i>Fish and crustaceans</i>	<i>Road vehicles, parts and accessories</i>	<i>Petroleum and petroleum products</i>	<i>Total</i>
	\$'000	\$'000	\$'000	\$'000	\$'000	\$'000	\$'000	\$'000	\$'000	\$'000
<b>1996-97</b>	182 478	745 227	397 949	260 974	378 923	542 204	191 093	655 881	286 458	5 009 345
<b>1997-98</b>	218 252	762 415	564 083	287 824	401 749	574 407	236 353	479 396	237 824	4 978 926
<b>1998-99</b>	197 882	618 638	693 150	210 759	384 041	543 378	252 330	651 594	154 481	5 301 000
<b>1997-98</b>										
January	15 469	107 580	25 835	20 260	21 783	56 613	24 571	15 137	12 427	368 261
February	21 189	81 091	43 674	17 710	27 617	41 123	18 253	19 097	18 197	363 980
March	23 933	76 734	55 440	26 154	37 500	51 720	22 850	37 642	19 792	474 786
April	20 323	97 030	50 539	16 054	30 937	48 037	21 581	24 260	12 089	410 224
May	19 757	66 147	58 188	28 786	41 200	44 539	18 447	30 767	18 406	440 938
June	16 188	83 309	52 876	17 049	25 411	49 813	21 084	24 268	13 434	412 631
<b>1998-99</b>										
July	11 886	41 106	48 323	17 802	37 239	36 741	23 828	44 144	8 909	388 182
August	12 036	57 675	54 365	14 136	30 391	51 467	30 657	43 037	20 669	455 318
September	17 730	46 101	70 084	21 737	30 230	39 773	28 826	82 634	12 086	473 925
October	20 302	37 462	72 262	23 109	28 835	39 298	16 321	45 615	19 012	418 818
November	23 420	12 520	40 014	23 410	33 813	44 046	15 738	76 332	8 740	398 228
December	21 957	84 612	48 409	21 800	39 439	46 039	18 732	72 038	22 904	515 449
January	12 512	93 036	39 131	10 991	20 715	32 232	20 641	17 334	3 544	375 993
February	19 308	43 302	50 983	18 309	29 483	47 297	20 912	23 346	8 932	409 368
March	17 378	73 094	66 839	16 754	29 490	58 773	18 415	102 036	11 714	553 461
April	12 617	38 467	56 304	10 319	41 312	39 892	20 369	26 728	4 080	381 180
May	16 088	42 140	69 559	19 785	34 793	57 351	20 328	28 122	19 003	459 801
June	12 648	49 123	76 877	12 607	28 301	50 469	17 563	90 228	14 888	471 277

(a) Final stage of production in South Australia.

Source: Unpublished data, International Merchandise Trade.

## 6

## MERCHANDISE EXPORTS, BY SELECTED COUNTRIES(a)

Period	European Union					East Asia				
	Unites States of America	Middle East	United Kingdom	Total European Union	New Zealand	Japan	China	Hong Kong	ASEAN	Total East Asia
	\$'000	\$'000	\$'000	\$'000	\$'000	\$'000	\$'000	\$'000	\$'000	\$'000
<b>1996-97</b>	707 871	563 409	304 645	641 308	382 103	611 870	244 917	234 547	615 943	2 030 435
<b>1997-98</b>	632 203	389 766	424 251	849 932	354 698	612 218	331 489	239 652	491 573	2 023 128
<b>1998-99</b>	704 009	640 228	474 751	922 155	387 231	603 422	302 092	218 936	432 303	1 874 568
<b>1997-98</b>										
January	19 822	45 843	16 660	37 176	23 869	39 153	24 539	27 258	34 196	155 154
February	33 828	32 808	28 219	69 543	29 889	36 608	36 830	23 072	20 162	137 566
March	63 876	57 910	33 353	78 020	37 792	48 425	37 418	21 220	39 874	180 733
April	38 373	52 361	39 893	78 611	35 943	45 057	12 599	14 654	21 024	127 024
May	43 378	27 970	46 314	99 584	32 077	51 107	28 785	20 116	25 054	160 370
June	52 213	30 122	35 019	68 106	31 172	55 368	22 009	14 993	26 900	154 564
<b>1998-99</b>										
July	49 983	36 832	37 794	66 456	36 659	45 130	11 003	19 773	25 676	124 710
August	34 075	33 052	45 878	81 627	33 707	73 436	23 384	16 548	45 343	181 958
September	87 466	53 605	47 456	82 396	32 194	67 693	26 358	16 476	24 026	157 084
October	39 435	43 420	50 012	83 493	31 677	39 683	33 269	20 642	29 472	143 668
November	85 490	33 540	23 357	42 687	29 428	30 424	39 460	19 539	41 004	160 830
December	72 375	108 906	31 536	82 054	31 828	50 270	17 915	25 466	39 024	170 823
January	25 730	91 222	27 983	61 848	20 912	25 422	31 133	16 119	19 791	113 457
February	33 153	39 031	32 558	77 294	29 617	51 987	20 986	21 833	35 769	156 683
March	83 946	87 010	48 802	95 843	34 227	62 043	29 294	17 954	47 432	188 615
April	45 093	34 532	36 355	73 401	29 922	32 713	17 751	15 274	41 850	132 664
May	50 172	41 238	43 961	95 566	31 885	72 142	28 904	15 968	35 925	187 601
June	97 092	37 841	49 060	79 489	45 175	52 479	22 634	13 345	46 992	156 478

(a) Final stage of production in South Australia.

Source: Unpublished data, International Merchandise Trade.

Period	Manufacturing								Total
	Agriculture, forestry and fishing	Mining	Food, beverages and tobacco	Petroleum, coal, chemical associated product	Metal product	Machinery and equipment	Other manu- facturing	Other industries/ confidential	
	\$'000	\$'000	\$'000	\$'000	\$'000	\$'000	\$'000	\$'000	\$'000
<b>1996-97</b>	1 067 084	202 162	981 918	290 361	569 679	1 140 136	226 780	531 226	5 009 345
<b>1997-98</b>	1 181 343	137 851	1 205 081	292 175	615 344	994 597	262 815	289 719	4 978 926
<b>1998-99</b>	1 040 969	73 115	1 252 709	285 023	580 957	1 173 991	263 286	630 947	5 300 998
<b>1997-98</b>									
January	130 921	6 767	77 125	17 938	58 347	43 235	18 390	15 538	368 261
February	112 796	805	91 561	25 843	42 638	56 040	19 488	14 809	363 980
March	124 635	13 279	116 808	23 588	55 768	86 292	29 905	24 510	474 786
April	120 229	896	105 811	22 179	51 716	64 150	20 316	24 927	410 224
May	100 208	3 524	118 987	30 653	49 662	84 588	23 965	29 351	440 938
June	114 836	10 307	105 051	24 871	52 139	59 884	17 105	28 438	412 631
<b>1998-99</b>									
July	80 391	916	95 544	16 951	42 744	92 690	17 418	41 528	388 182
August	88 413	8 725	98 298	34 630	53 203	90 632	19 941	61 475	455 318
September	77 554	1 066	112 615	26 209	40 577	122 096	21 894	71 914	473 925
October	70 620	9 066	121 035	27 700	41 345	85 546	21 252	42 255	418 818
November	45 312	14 644	86 095	19 311	48 123	123 267	20 329	41 147	398 228
December	117 058	7 760	101 584	32 699	51 955	121 086	22 642	60 664	515 449
January	118 567	1 112	77 470	13 355	33 004	46 527	18 209	67 749	375 993
February	99 744	9 484	100 575	19 255	49 653	63 347	21 822	45 487	409 368
March	121 061	511	113 641	23 276	63 539	145 813	30 602	55 019	553 461
April	62 384	7 741	104 590	14 464	41 132	79 506	26 041	45 321	381 180
May	85 970	8 771	121 544	30 716	61 347	73 138	24 007	54 308	459 801
June	73 894	3 320	119 719	26 457	54 336	130 343	19 129	44 080	471 277

(a) Final stage of production in South Australia.

Source: Unpublished data, International Merchandise Trade.

## 8

## MERCHANDISE IMPORTS, BY SELECTED COMMODITY GROUP(a)

<i>Period</i>	<i>Food, beverages and tobacco</i>	<i>Petroleum and petroleum products</i>	<i>Chemicals</i>	<i>Textiles</i>	<i>Metals and metal manufactures</i>	<i>Machinery</i>	<i>Road vehicle parts and accessories</i>	<i>Other manufactured goods</i>	<i>Total</i>
	\$'000	\$'000	\$'000	\$'000	\$'000	\$'000	\$'000	\$'000	\$'000
<b>1996-97</b>	136 695	505 633	225 187	79 708	223 259	868 346	538 690	695 238	3 413 043
<b>1997-98</b>	148 771	445 218	274 741	93 815	280 562	1 061 260	772 203	739 266	3 940 198
<b>1998-99</b>	162 823	271 444	281 132	96 085	264 936	917 869	811 986	766 070	3 716 657
<b>1997-98</b>									
January	13 497	29 721	39 180	8 063	24 670	96 949	54 033	55 492	332 475
February	10 608	39 221	26 084	8 195	27 664	69 791	53 601	70 676	314 306
March	11 294	41 325	31 280	8 678	26 177	86 622	70 446	70 667	357 051
April	10 012	22 090	38 574	9 335	21 137	113 439	61 182	63 078	350 581
May	11 224	38 780	27 490	8 945	21 394	74 468	56 026	60 750	310 724
June	13 086	15 049	18 431	8 041	25 140	89 988	70 652	62 513	313 741
<b>1998-99</b>									
July	14 293	23 350	13 006	9 514	26 572	95 455	71 756	64 569	329 710
August	15 000	18 697	14 930	8 217	24 495	83 417	67 746	66 505	308 231
September	14 111	12 616	22 609	8 647	25 446	73 876	63 421	63 209	292 070
October	15 828	11 640	18 150	9 116	23 219	82 586	78 648	59 588	310 764
November	15 327	36 487	23 598	7 876	21 420	75 548	70 427	71 943	334 583
December	13 026	16 970	18 804	6 467	19 204	75 018	64 460	59 286	283 700
January	12 745	17 413	35 290	6 819	21 549	79 714	58 788	59 244	306 685
February	11 547	31 555	29 787	7 365	19 683	64 636	68 690	56 343	301 933
March	16 139	26 963	29 953	7 793	23 341	72 023	77 960	79 641	349 094
April	12 642	25 605	34 573	8 490	22 618	67 967	73 157	57 687	314 909
May	9 428	27 844	24 936	8 295	18 214	75 429	49 334	56 050	283 430
June	12 738	22 304	15 496	7 486	19 174	72 198	67 600	72 006	301 547

(a) Goods released from Customs control in South Australia.

Source: Unpublished data, International Merchandise Trade.

## 9

## TURNOVER OF RETAIL ESTABLISHMENTS, BY INDUSTRY—TREND

Period	Food retailing	Department stores	Clothing and soft good retailing	Household good retailing	Recreational good retailing	Other retailing	Hospitality and services	Total
	\$m	\$m	\$m	\$m	\$m	\$m	\$m	\$m
<b>1997-98</b>								
April	385.3	93.5	46.5	91.0	34.7	82.5	128.0	862.6
May	387.2	92.9	47.3	89.7	35.3	82.2	132.7	867.2
June	389.1	92.4	47.9	88.6	35.9	81.5	136.8	871.7
<b>1998-99</b>								
July	391.2	92.0	48.4	87.4	36.2	81.0	139.5	875.4
August	393.7	91.9	48.7	86.7	36.2	81.0	140.4	878.6
September	396.2	91.8	48.5	86.6	35.9	81.6	139.3	879.8
October	399.9	91.5	47.9	87.3	35.2	82.9	137.0	881.8
November	404.4	91.4	47.4	88.6	34.3	84.5	134.6	885.3
December	408.6	91.4	47.3	89.7	33.4	86.0	132.9	889.2
January	410.7	91.6	47.6	90.0	32.5	86.9	132.5	891.9
February	409.9	91.5	48.5	89.4	31.9	87.2	133.6	891.9
March	406.4	91.0	49.6	88.2	31.4	87.1	135.7	889.4
April	401.5	90.5	50.7	86.9	31.0	86.8	137.8	885.1
May	396.2	89.9	51.4	85.7	30.6	86.3	139.8	879.8
June	391.1	89.6	52.1	84.7	30.3	85.9	141.1	874.2

Source: Retail Trade, Australia (Cat. no. 8501.0).

## 10

## NEW MOTOR VEHICLE REGISTRATIONS, BY TYPE OF VEHICLE

Period	Original			Seasonally adjusted			Trend estimate		
	Passenger vehicles	Other vehicles	Total	Passenger vehicles	Other vehicles	Total	Passenger vehicles	Other vehicles	Total
<b>1997-98</b>									
April	3 385	678	4 063	3 820	706	4 526	3 809	666	4 474
May	3 693	686	4 379	4 005	647	4 653	3 937	668	4 605
June	4 889	872	5 761	4 172	632	4 804	4 009	670	4 679
<b>1998-99</b>									
July	4 411	681	5 092	4 233	678	4 911	3 992	673	4 665
August	3 864	676	4 540	3 837	751	4 588	3 893	675	4 569
September	3 569	597	4 166	3 471	632	4 102	3 744	676	4 419
October	3 677	560	4 237	3 609	623	4 232	3 605	670	4 275
November	3 803	672	4 475	3 635	705	4 340	3 522	657	4 179
December	3 624	718	4 342	3 425	666	4 091	3 506	638	4 144
January	2 603	442	3 045	3 512	599	4 111	3 536	621	4 157
February	3 355	568	3 923	3 428	610	4 038	3 568	608	4 176
March	4 165	644	4 809	3 820	552	4 372	3 577	599	4 176
April	3 256	559	3 815	3 626	597	4 223	3 569	595	4 164
May	3 294	672	3 966	3 535	633	4 168	3 546	595	4 141
June	3 838	856	4 694	3 347	601	3 948	3 522	600	4 122

Source: Transport SA.

# 11

## ACTUAL PRIVATE NEW CAPITAL EXPENDITURE, BY SELECTED INDUSTRY AND TYPE OF ASSET

Period	Industry			Total	Type of asset	
	Mining	Manufacturing	Other selected industries		New buildings and structures	Equipment, plant and machinery
ANNUAL (\$m)						
<b>1995-96</b>	196	756	921	1 873	358	1 515
<b>1996-97</b>	489	840	1 251	2 580	595	1 985
<b>1997-98</b>	1 366	820	1 006	3 193	793	2 400
QUARTERLY, ORIGINAL (\$m)						
<b>1997-98</b>						
December	447	265	241	953	196	757
March	360	168	193	721	188	534
June	215	217	370	802	250	552
<b>1998-99</b>						
September	125	154	322	601	157	444
December	150	248	267	665	171	494
March	98	187	222	507	97	410
QUARTERLY, TREND (\$m)						
<b>1997-98</b>						
December	n.a.	n.a.	n.a.	822	187	635
March	n.a.	n.a.	n.a.	822	214	608
June	n.a.	n.a.	n.a.	761	218	543
<b>1998-99</b>						
September	n.a.	n.a.	n.a.	673	186	487
December	n.a.	n.a.	n.a.	600	144	456
March	n.a.	n.a.	n.a.	563	114	450

Source: State Estimates of Private New Capital Expenditure (Cat. no. 5646.0).

# 12

## TOURIST ACCOMMODATION

Period	Hotels with facilities				Motels and guesthouses				Serviced apartments			
	Estab-lish-ments	Guest rooms	Room occu-pancy	Takings	Estab-lish-ments	Flats, units and houses	Room occu-pancy	Takings	Estab-lish-ments	Guest rooms	Room occu-pancy	Takings
	no.	no.	%	\$'000	no.	no.	%	\$'000	no.	no.	%	\$'000
<b>1997-98</b>												
September	62	3 875	56.2	19 193	150	5 179	51.3	17 420	17	624	57.9	2 714
December	61	3 855	61.3	22 156	151	5 225	57.9	19 960	17	626	67.3	3 269
March	59	3 808	60.1	20 851	149	5 181	57.4	19 247	19	726	67.6	3 913
June	61	4 048	53.6	19 048	147	5 136	52.8	17 773	19	750	59.4	3 551
<b>1998-99</b>												
September	61	4 048	57.2	21 068	146	5 112	51.7	17 805	19	740	56.3	3 667
December	61	4 053	63.0	24 954	146	5 135	58.1	19 990	22	888	66.0	4 884
March	61	4 053	59.6	22 181	145	5 119	55.3	18 793	22	888	65.8	4 516

Source: Tourist Accommodation, Australia (Cat. no. 8635.0).

Period	Houses		Total dwelling units		New residential building \$m	Alterations and additions to residential building \$m	Total residential building \$m	Non-residential building \$m	Total building \$m
	Private sector	Total	Private sector	Total					
	no.	no.	no.	no.					
ANNUAL									
<b>1996-97</b>	5 512	5 608	6 148	6 264	516	117	632	581	1 213
<b>1997-98</b>	6 187	6 380	6 997	7 215	630	128	758	602	1 360
<b>1998-99</b>	6 568	6 777	7 697	7 928	776	144	920	657	1 576
MONTHLY, ORIGINAL									
<b>1997-98</b>									
June	610	641	771	810	70.0	10.2	80.3	36.5	116.8
<b>1998-99</b>									
July	654	660	893	901	78.6	11.8	90.4	40.2	130.6
August	528	536	622	634	58.5	10.6	69.1	72.1	141.2
September	600	625	717	742	103.4	13.1	116.5	46.9	163.5
October	518	542	561	585	55.5	10.8	66.3	40.5	106.9
November	540	553	587	606	58.0	12.4	70.4	58.3	128.7
December	489	496	556	563	50.3	10.0	60.3	53.5	113.7
January	361	371	434	444	45.6	9.5	55.1	68.0	123.1
February	494	510	591	607	58.2	12.4	70.6	118.4	189.0
March	644	683	711	750	69.1	14.6	83.7	56.1	139.8
April	487	497	558	568	56.6	10.8	67.4	22.7	90.1
May	601	631	653	683	69.5	11.4	80.9	53.3	134.2
June	652	673	814	845	72.3	16.5	88.8	26.5	115.3
MONTHLY, TREND									
<b>1997-98</b>									
June	535	550	658	673	60.6	10.3	71.0	43.3	114.3
<b>1998-99</b>									
July	535	551	660	676	60.6	10.6	71.1	46.9	118.0
August	537	554	650	667	59.6	10.7	70.2	51.8	122.0
September	539	557	632	652	58.2	10.7	68.9	57.5	126.5
October	537	556	611	633	56.9	10.9	67.8	62.2	130.0
November	534	553	597	620	56.4	11.2	67.6	64.3	131.8
December	530	548	597	620	57.3	11.5	68.8	63.8	132.6
January	531	549	608	630	59.4	11.9	71.3	61.0	132.4
February	535	553	622	643	61.9	12.3	74.2	56.6	130.8
March	545	563	636	656	64.1	12.7	76.8	51.1	127.9
April	559	578	650	670	66.0	13.1	79.1	44.9	124.0
May	573	592	666	686	67.5	13.5	81.0	38.9	119.9
June	588	607	682	702	68.8	13.9	82.7	33.0	115.7

Source: Building Approvals, South Australia (Cat. no. 8731.4).



## 14

## BUILDING COMMENCEMENTS

Period	New houses		Total dwelling units(a)		New residential building \$m	Alterations and additions to residential building \$m	Non-residential building		
	Private sector	Total	Private sector	Total			Private sector	Total	Total building
	no.	no.	no.	no.			\$m	\$m	\$m
<b>1995-96</b>	4 837	5 071	5 691	5 960	496.5	121.7	452.8	631.8	1 250.0
<b>1996-97</b>	5 057	5 112	5 727	5 789	496.3	116.9	423.4	568.8	1 181.9
<b>1997-98</b>	5 628	5 823	6 437	6 653	614.7	134.5	419.0	550.7	1 299.9
<b>1996-97</b>									
March	1 099	1 102	1 242	1 247	106.3	26.2	76.6	121.2	253.6
June	1 522	1 541	1 670	1 691	147.5	30.7	193.5	230.2	408.4
<b>1997-98</b>									
September	1 354	1 402	1 489	1 541	131.9	31.6	84.5	112.3	275.8
December	1 531	1 588	1 841	1 906	179.8	33.8	139.2	174.1	387.7
March	1 409	1 436	1 617	1 648	150.1	38.7	68.1	95.2	284.0
June	1 334	1 397	1 490	1 558	152.9	30.4	134.5	169.1	352.4
<b>1998-99</b>									
September	1 563	1 610	1 927	1 980	184.7	35.0	89.5	131.1	350.7
December	1 644	1 699	1 891	1 965	231.1	34.3	94.6	134.8	400.2
March	1 292	1 325	1 603	1 636	170.4	32.7	140.6	230.6	433.6

(a) Includes conversions.

Source: *Building Activity, South Australia* (Cat. no. 8752.4).

## VALUE OF BUILDING WORK DONE AND COMPLETED DURING PERIOD

Period	New houses		New residential building			Non-residential building		Total building		
	Private sector	Total	Private sector	Total	Alterations and additions to residential building	Total residential building	Private sector	Total	Private sector	Total
	\$m	\$m	\$m	\$m	\$m	\$m	\$m	\$m	\$m	\$m
VALUE OF BUILDING WORK DONE										
<b>1995-96</b>	441.4	460.5	512.9	534.8	130.6	665.4	311.4	542.1	953.2	1 207.5
<b>1996-97</b>	433.9	438.9	485.2	490.4	122.3	612.7	444.2	663.3	1 049.8	1 275.9
<b>1997-98</b>	522.9	535.7	590.4	605.4	131.6	737.0	538.9	685.0	1 259.3	1 422.0
<b>1996-97</b>										
March	99.9	100.3	114.1	114.6	26.8	141.4	100.8	147.8	241.6	289.2
June	127.6	128.7	140.5	141.7	32.0	173.7	140.4	181.9	312.8	355.6
<b>1997-98</b>										
September	122.5	125.8	136.3	139.9	32.9	172.8	149.8	186.7	318.5	359.4
December	134.0	137.7	152.3	157.1	36.2	193.3	157.7	197.7	345.2	391.0
March	130.5	132.8	147.4	149.9	31.4	181.3	119.1	149.2	297.7	330.4
June	135.9	139.4	154.5	158.5	31.2	189.7	112.3	151.5	297.9	341.1
<b>1998-99</b>										
September	150.9	155.8	175.8	180.9	39.8	220.7	135.5	162.9	350.5	383.6
December	151.4	155.1	185.6	189.9	39.9	230.1	121.5	160.4	347.0	390.6
March	142.3	144.8	168.4	171.4	33.1	204.7	84.5	130.3	286.1	335.0
VALUE OF BUILDING WORK COMPLETED										
<b>1995-96</b>	459.9	481.8	530.9	556.5	132.0	688.6	292.8	494.4	953.9	1 183.0
<b>1996-97</b>	408.9	414.1	461.8	467.1	123.6	590.7	328.2	584.3	911.8	1 175.0
<b>1997-98</b>	504.1	514.7	561.8	574.7	125.0	699.7	571.2	744.0	1 256.3	1 443.7
<b>1996-97</b>										
March	94.9	95.7	108.3	109.2	25.3	134.5	92.6	134.9	226.2	269.4
June	119.7	120.4	130.5	131.1	32.6	163.7	86.4	228.5	249.5	392.2
<b>1997-98</b>										
September	118.3	120.5	130.5	132.7	34.3	166.9	68.9	102.6	233.1	269.5
December	148.3	151.6	168.9	172.8	39.2	212.1	310.5	369.2	517.7	581.2
March	112.2	114.5	126.4	129.3	26.9	156.3	81.7	124.3	235.0	280.5
June	125.3	128.1	136.0	139.8	24.6	164.4	110.1	148.0	270.6	312.5
<b>1998-99</b>										
September	148.1	152.4	161.1	165.8	36.1	201.9	68.2	106.7	264.9	308.6
December	168.4	174.1	190.2	196.1	49.0	245.4	174.9	203.3	414.1	448.7
March	144.4	146.9	179.3	182.3	36.0	218.6	160.3	203.7	375.7	422.3

Source: Building Activity, South Australia (Cat. no. 8752.4).

<i>Period</i>	<i>Pigmeat</i>	<i>Beef</i>	<i>Mutton</i>	<i>Lamb</i>	<i>Gas</i>	<i>Coal(a)</i>	<i>Sawn timber(b)</i>
	<i>tonnes</i>	<i>tonnes</i>	<i>tonnes</i>	<i>tonnes</i>	<i>m MJ</i>	<i>tonnes</i>	<i>m<sup>3</sup></i>
<b>1996-97</b>	29 842	85 478	51 778	34 890	76 495	2 633 820	333 691
<b>1997-98</b>	26 384	80 924	58 554	38 224	78 441	2 815 870	361 257
<b>1998-99</b>	25 203	61 873	47 780	43 449	86 228	n.y.a.	374 590
<b>1997-98</b>							
September	7 431	18 704	10 889	6 594	21 942	752 868	91 537
December	6 301	22 324	16 769	9 963	18 997	610 208	83 957
March	6 731	21 110	20 144	10 561	18 098	718 990	89 540
June	5 921	18 786	10 752	11 106	19 404	733 804	96 223
<b>1998-99</b>							
September	5 253	15 129	10 342	10 733	23 573	748 575	95 339
December	4 646	17 514	15 721	10 982	19 718	671 040	94 578
March	6 332	14 686	14 013	10 086	19 343	826 095	88 282
June	8 972	14 544	7 704	11 648	23 594	n.y.a.	96 391

(a) Data supplied by Flinders Power Pty Ltd.

(b) From Australian softwood logs only.

Source: *Livestock Products, Australia (Cat. no. 8752.4); Unpublished data, Manufacturing Production.*

<i>Period</i>	<i>Food</i>	<i>Clothing</i>	<i>Housing</i>	<i>Household equipment and operation</i>	<i>Transport- ation</i>	<i>Tobacco and alcohol</i>	<i>Health and personal care</i>	<i>Recreation and education</i>	<i>All groups</i>
ANNUAL AVERAGE (1989-90 = 100.0)									
<b>1996-97</b>	120.8	105.5	98.9	113.4	124.6	165.3	165.4	121.1	122.3
<b>1997-98</b>	122.7	105.7	90.7	113.7	122.1	169.3	165.4	124.7	121.6
<b>1998-99</b>	127.7	105.0	92.0	113.3	121.6	171.8	164.2	127.5	123.2
QUARTERLY (1989-90 = 100.0)									
<b>1997-98</b>									
March	122.9	105.1	89.9	113.7	121.2	170.7	167.8	125.5	121.7
June	123.7	105.9	90.3	113.9	121.8	170.5	171.1	126.1	122.4
<b>1998-99</b>									
September	125.9	105.3	91.2	113.7	121.8	170.7	171.8	125.9	123.0
December	128.2	105.4	91.9	113.9	121.3	171.4	170.9	126.5	123.6
March	128.0	103.7	92.2	112.3	120.9	171.8	156.6	128.6	122.7
June	128.8	105.7	92.8	113.2	122.4	173.3	157.5	128.9	123.6
PERCENTAGE CHANGE FROM SAME QUARTER OF PREVIOUS YEAR									
<b>1997-98</b>									
March	1.4	0.0	-7.8	0.4	-3.5	3.3	0.1	2.6	-0.7
June	1.5	0.7	-4.0	0.3	-0.7	2.4	1.8	2.6	0.4
<b>1998-99</b>									
September	3.2	-0.1	-1.1	0.1	-1.1	2.1	8.3	1.8	1.5
December	5.1	-0.8	1.9	0.3	-0.8	1.5	4.1	2.3	2.0
March	4.1	-1.3	2.6	-1.2	-0.2	0.6	-6.7	2.5	0.8
June	4.1	-0.2	2.8	-0.6	0.5	1.6	-7.9	2.2	1.0
PERCENTAGE CHANGE FROM PREVIOUS QUARTER									
<b>1997-98</b>									
March	0.7	-1.0	-0.3	0.1	-0.9	1.1	2.3	1.5	0.4
June	0.7	0.8	0.4	0.2	0.5	-0.1	2.0	0.5	0.6
<b>1998-99</b>									
September	1.8	-0.6	1.0	-0.2	0.0	0.1	0.4	-0.2	0.5
December	1.8	0.1	0.8	0.2	-0.4	0.4	-0.5	0.5	0.5
March	-0.2	-1.6	0.3	-1.4	-0.3	0.2	-8.4	1.7	-0.7
June	0.6	1.9	0.7	0.8	1.2	0.9	0.6	0.2	0.7

Source: Consumer Price Index (Cat. no. 6401.0).

# 18

## ESTIMATED RESIDENT POPULATION AND COMPONENTS OF POPULATION CHANGE

Period	Net migration			Total increase	Population at end of period
	Natural increase	Interstate	Overseas(a)		
<b>1995-96</b>	7 500	-6 192	3 653	4 824	1 474 253
<b>1996-97</b>	6 951	-4 628	3 104	5 427	1 479 680
<b>1997-98</b>	6 574	-3 254	4 294	7 614	1 487 294
<b>1996-97</b>					
March	2 051	-1 037	1 142	2 156	1 478 734
June	1 672	-862	136	946	1 479 680
<b>1997-98</b>					
September	1 322	-755	1 124	1 691	1 481 371
December	1 544	-1 098	598	1 044	1 482 415
March	2 083	-591	2 027	3 519	1 485 934
June	1 625	-810	545	1 360	1 487 294
<b>1998-99</b>					
September	1 188	-422	778	1 544	1 488 838
December	1 775	-901	707	1 581	1 490 419

(a) Includes category jumping.

Source: Australian Demographic Statistics (Cat. no. 3101.0).

# 19

## BIRTHS, DEATHS, MARRIAGES AND DIVORCES

Period	Registrations			
	Births	Deaths	Marriages	Divorces
<b>1995-96</b>	18 839	11 339	8 211	4 236
<b>1996-97</b>	18 576	11 625	8 003	4 362
<b>1997-98</b>	18 006	11 432	7 988	4 113
<b>1996-97</b>				
March	4 573	2 522	2 436	1 018
June	4 586	2 914	1 750	1 005
<b>1997-98</b>				
September	4 542	3 220	1 079	1 034
December	4 487	2 943	2 680	1 058
March	4 557	2 474	2 405	1 016
June	4 420	2 795	1 824	1 005
<b>1998-99</b>				
September	4 648	3 460	1 294	1 053
December	4 545	2 770	2 499	1 085

Source: Australian Demographic Statistics (Cat. no. 3101.0).

Period	Employed full-time		Employed part-time		Total employed		Unemployed		Labour force	
	Males	Females	Males	Females	Males	Females	Males	Females	Males	Females
ANNUAL AVERAGE ('000)										
<b>1996-97</b>	320.8	150.5	48.6	140.7	369.4	291.2	42.1	27.5	411.5	318.7
<b>1997-98</b>	317.5	145.9	48.8	136.4	366.3	282.3	42.1	28.8	408.4	311.0
<b>1998-99</b>	319.4	148.1	49.2	136.2	368.6	284.3	40.2	26.6	408.8	310.9
MONTHLY, ORIGINAL ('000)										
<b>1997-98</b>										
May	310.5	142.7	48.6	132.2	359.1	274.8	42.0	30.0	401.1	304.8
June	314.2	140.8	49.7	131.8	363.9	272.5	38.7	29.2	402.6	301.7
<b>1998-99</b>										
July	317.9	145.3	44.6	128.0	362.5	273.3	42.3	26.5	404.8	299.8
August	316.6	144.1	47.0	131.1	363.6	275.2	42.6	29.1	406.2	304.3
September	322.6	147.7	44.7	136.6	367.3	284.3	44.6	27.4	411.9	311.7
October	318.8	148.8	47.1	137.7	366.0	286.4	40.5	24.1	406.5	310.5
November	320.5	147.1	46.6	139.0	367.1	286.1	42.7	25.2	409.8	311.4
December	323.6	150.8	51.0	141.7	374.6	292.5	42.1	24.7	416.6	317.3
January	315.4	147.2	49.5	131.2	364.9	278.4	45.4	29.5	410.3	308.0
February	320.7	150.6	51.1	134.4	371.8	285.0	40.6	28.3	412.4	313.3
March	322.9	147.4	48.0	141.1	370.8	288.5	38.6	27.7	409.4	316.2
April	316.4	149.2	50.9	138.6	367.4	287.8	35.2	24.0	402.5	311.8
May	318.6	152.9	53.7	132.8	372.3	285.7	36.6	27.2	408.9	312.9
June	319.3	146.3	55.9	141.8	375.3	288.1	31.0	25.0	406.3	313.1
July	320.3	152.1	53.7	137.4	374.0	289.5	30.7	23.6	404.7	313.1
MONTHLY, TREND ('000)										
<b>1997-98</b>										
May	314.9	145.0	48.1	129.2	363.0	274.2	41.7	29.8	404.7	304.0
June	315.5	144.9	47.7	129.0	363.2	273.9	42.1	29.7	405.3	303.6
<b>1998-99</b>										
July	316.7	145.3	47.0	129.7	363.7	275.0	42.6	29.4	406.3	304.4
August	317.8	146.0	46.7	131.4	364.5	277.4	43.0	28.7	407.5	306.1
September	318.3	146.7	47.1	133.9	365.4	280.6	43.2	27.8	408.6	308.4
October	318.5	147.2	47.9	136.4	366.4	283.6	43.0	26.9	409.4	310.5
November	318.5	147.2	48.9	138.8	367.4	286.0	42.5	26.2	409.9	312.2
December	318.7	147.2	49.6	139.9	368.2	287.2	41.8	25.8	410.0	312.9
January	319.4	147.5	49.6	140.0	369.0	287.5	40.8	25.6	409.8	313.1
February	320.3	148.2	49.7	139.0	369.8	287.2	39.6	25.7	409.4	312.9
March	321.0	149.1	49.5	137.8	370.7	286.9	38.1	25.8	408.8	312.7
April	321.2	150.0	50.4	136.8	371.6	286.8	36.6	25.8	408.2	312.6
May	321.0	150.7	49.5	136.1	372.6	286.8	35.2	25.7	407.8	312.5
June	320.5	151.2	51.6	135.8	373.5	287.0	34.0	25.7	407.5	312.7
July	319.8	151.6	54.6	135.8	374.4	287.4	32.9	25.5	407.3	312.9

(a) Population aged 15 and over.

Source: Labour Force, Australia, Preliminary (Cat. no. 6202.0).

## 21

## CIVILIAN LABOUR FORCE, UNEMPLOYMENT AND PARTICIPATION RATES(a)

Period	Civilian population			Unemployment rate			Participation rate		
	Males aged 15 and over	Females aged 15 and over	Persons aged 15-19	Males all ages	Females all ages	Persons all ages	Males	Females	Persons
	'000	'000	%	%	%	%	%	%	%
ANNUAL AVERAGE									
<b>1996-97</b>	579.8	600.6	23.7	10.2	8.6	9.5	71.0	53.1	61.9
<b>1997-98</b>	583.9	604.5	23.2	10.3	9.2	9.8	70.8	51.5	61.0
<b>1998-99</b>	583.2	609.8	21.7	9.8	8.6	9.3	70.1	51.0	60.3
MONTHLY, ORIGINAL									
<b>1997-98</b>									
May	580.5	607.0	24.8	10.5	9.8	10.2	69.1	50.2	59.5
June	580.7	607.3	19.9	9.6	9.7	9.6	69.3	49.7	59.3
<b>1998-99</b>									
July	581.1	607.7	23.0	10.5	8.8	9.8	69.7	49.3	59.3
August	581.4	608.0	23.3	10.5	9.6	10.1	69.9	50.0	59.7
September	581.7	608.4	23.1	10.8	8.8	9.9	70.8	51.2	60.8
October	582.2	608.8	23.1	10.0	7.8	9.0	69.8	51.0	60.2
November	582.6	609.2	21.2	10.4	8.1	9.4	70.3	51.1	60.5
December	583.0	609.7	19.8	10.1	7.8	9.1	71.5	52.0	61.5
January	583.4	610.1	20.1	11.1	9.6	10.4	70.3	50.5	60.2
February	583.8	610.5	20.4	9.8	9.0	9.5	70.6	51.3	60.8
March	584.2	610.9	21.8	9.4	8.8	9.1	70.1	51.8	60.7
April	584.6	611.3	17.9	8.7	7.7	8.3	68.9	51.0	59.7
May	585.0	611.6	24.8	8.9	8.7	8.8	69.9	51.2	60.3
June	585.3	611.9	21.6	7.6	8.0	7.8	69.4	51.2	60.1
July	585.7	612.3	21.4	7.6	7.5	7.6	69.1	51.1	59.9
MONTHLY, TREND									
<b>1997-98</b>									
May	n.a.	n.a.	n.a.	10.3	9.8	10.1	69.7	50.1	59.7
June	n.a.	n.a.	n.a.	10.4	9.8	10.1	69.8	50.0	59.7
<b>1998-99</b>									
July	n.a.	n.a.	n.a.	10.5	9.6	10.1	69.9	50.1	59.8
August	n.a.	n.a.	n.a.	10.6	9.4	10.0	70.1	50.3	60.0
September	n.a.	n.a.	n.a.	10.6	9.0	9.9	70.2	50.7	60.2
October	n.a.	n.a.	n.a.	10.5	8.7	9.7	70.3	51.0	60.5
November	n.a.	n.a.	n.a.	10.4	8.4	9.5	70.4	51.2	60.6
December	n.a.	n.a.	n.a.	10.2	8.3	9.3	70.3	51.3	60.6
January	n.a.	n.a.	n.a.	10.0	8.2	9.2	70.2	51.3	60.6
February	n.a.	n.a.	n.a.	9.7	8.2	9.0	70.1	51.3	60.5
March	n.a.	n.a.	n.a.	9.3	8.2	8.9	70.0	51.2	60.4
April	n.a.	n.a.	n.a.	9.0	8.2	8.7	69.8	51.1	60.3
May	n.a.	n.a.	n.a.	8.6	8.2	8.5	69.7	51.1	60.2
June	n.a.	n.a.	n.a.	8.3	8.2	8.3	69.6	51.1	60.2
July	n.a.	n.a.	n.a.	8.1	8.2	8.1	69.6	51.1	60.1

(a) Population aged 15 and over.

Source: Labour Force, Australia, Preliminary (Cat. no. 6202.0).

## AVERAGE WEEKLY EARNINGS OF EMPLOYEES

Period	Males			Females			Persons		
	Full-time adult ordinary time earnings	Full-time adult total earnings	All males total earnings	Full-time adult ordinary time earnings	Full-time adult total earnings	All females total earnings	Full-time adult ordinary time earnings	Full-time adult total earnings	All employees total earnings
ANNUAL AVERAGE (\$ per week)									
<b>1996-97</b>	678.20	735.10	636.90	575.10	589.40	408.70	644.30	687.20	529.80
<b>1997-98</b>	705.60	755.05	646.28	606.05	619.33	438.50	670.53	707.20	545.70
<b>1998-99</b>	741.20	797.55	678.28	627.93	647.28	464.35	699.13	741.70	575.23
QUARTERLY, ORIGINAL (\$ per week)									
<b>1997-98</b>									
20 February	715.10	764.60	656.10	626.20	642.10	447.70	683.60	721.20	553.60
15 May	713.80	759.50	646.30	620.10	634.30	452.40	680.10	714.40	552.80
<b>1998-99</b>									
21 August	737.50	785.60	670.40	623.50	636.30	462.10	694.70	729.60	569.60
20 November	745.20	811.60	679.00	631.50	652.90	471.50	702.50	752.00	580.30
19 February	739.90	796.20	677.40	632.00	651.90	466.50	699.60	742.30	574.90
21 May	742.20	796.80	686.30	624.70	648.00	457.30	699.70	742.90	576.10
QUARTERLY, TREND (\$ per week)									
<b>1997-98</b>									
20 February	707.10	753.40	643.70	613.90	627.50	444.10	673.50	708.20	545.60
15 May	720.20	768.70	653.80	623.20	638.00	454.20	684.90	720.80	556.70
<b>1998-99</b>									
21 August	734.30	788.10	668.30	627.90	643.90	463.80	694.90	734.60	570.10
20 November	741.20	798.30	677.20	629.10	647.10	467.80	699.10	741.70	576.60
19 February	743.20	800.50	680.20	629.00	649.50	465.40	700.50	744.30	576.50
21 May	741.80	797.60	679.40	626.10	649.10	458.90	699.40	742.90	572.70

Source: Average Weekly Earnings, States and Australia (Cat. no. 6302.0).



## 23

### SECURED HOUSING FINANCE COMMITMENTS

Period	Original		Seasonally adjusted		Trend	
	Dwelling units	Value	Dwelling units	Value	Dwelling units	Value
	no.	\$m	no.	\$m	no.	\$m
<b>1997-98</b>						
April	3 227	271.5	3 229	272.0	3 157	264.0
May	3 054	258.0	3 157	264.0	3 175	267.0
June	3 581	307.0	3 288	283.0	3 146	266.0
<b>1998-99</b>						
July	3 144	269.0	3 117	266.0	3 076	262.0
August	2 787	233.0	2 985	249.0	2 987	258.0
September	2 807	242.0	2 807	245.0	2 911	255.0
October	2 685	238.0	2 740	247.0	2 871	256.0
November	3 000	278.0	2 879	267.0	2 879	261.0
December	3 151	294.0	3 153	290.0	2 928	268.0
January	2 392	216.0	2 850	259.0	3 002	275.0
February	3 019	274.0	3 073	279.0	3 075	281.0
March	3 718	344.0	3 182	292.0	3 138	288.0
April	3 162	290.0	3 175	290.0	3 195	295.0
May	3 237	301.0	3 303	305.0	3 244	301.0
June	3 535	336.0	3 268	313.0	3 280	307.0

Source: Housing Finance for Owner Occupation, Australia (Cat. no. 5609.0).

## 24

### FINANCE COMMITMENTS

Period	Commercial finance commitments			Personal finance commitments			Total lease finance commitments
	Fixed loan facilities	Revolving credit facilities	Total commercial finance commitments	Fixed loan facilities	Revolving credit facilities	Total personal finance commitments	
	\$m	\$m	\$m	\$m	\$m	\$m	
<b>1997-98</b>							
April	303.5	162.8	466.3	114.0	113.6	227.6	16.1
May	299.6	156.7	456.3	114.6	121.0	235.6	23.0
June	432.7	346.6	779.2	126.5	139.5	265.9	37.5
<b>1998-99</b>							
July	317.0	188.2	505.2	116.0	133.6	249.6	32.3
August	258.0	232.4	490.4	103.9	144.2	248.1	15.5
September	362.1	306.9	669.0	117.2	131.7	248.8	16.4
October	275.6	181.7	457.3	108.8	128.2	237.0	15.3
November	355.3	166.0	521.2	116.2	140.0	256.2	22.6
December	305.8	268.2	574.0	119.0	155.1	274.2	17.4
January	189.3	120.6	309.9	119.0	117.6	236.6	21.8
February	288.2	199.0	487.3	122.3	133.2	255.5	19.3
March	489.8	390.3	880.1	147.2	174.1	321.3	24.6
April	268.6	459.1	727.7	113.0	158.9	271.9	32.8
May	272.4	202.3	474.7	120.9	146.9	267.8	39.3
June	356.9	384.5	741.4	136.1	169.5	305.6	39.9

Source: Unpublished data, PC Ausstats.

## PUBLICATIONS SOURCE INDEX

- (1) *Australian National Accounts, Quarterly State Details*  
(Cat. no. 5206.0.40.001)
- (2) *International Merchandise Trade, Australia*  
(Cat. no. 5422.0) Quarterly
- (3) *Retail Trade, Australia* (Cat. no. 8501.0) Monthly
- (4) *New Motor Vehicles Registrations, Australia, Preliminary*  
(Cat. no. 9301.0) Monthly
- (5) *State Estimates of Private New Capital Expenditure*  
(Cat. no. 5646.0) Quarterly
- (6) *Tourist Accommodation, Australia* (Cat. no. 8635.0) Quarterly
- (7) *Building Approvals, Australia* (Cat. no. 8731.0) Monthly
- (8) *Building Activity, Australia* (Cat. no. 8752.0) Quarterly
- (8a) *Building Activity, Australia, Dwelling Unit Commencements, Preliminary* (Cat. no. 8750.0) Quarterly
- (9) *Engineering Construction Activity, Australia*  
(Cat. no. 8762.0) Quarterly
- (10) *Manufacturing Production, Australia, Preliminary*  
(Cat. no. 8301.0) Quarterly
- (11) *Livestock Products, Australia* (Cat. no. 7215.0) Quarterly
- (12) *Actual and Expected Private Mineral Exploration, Australia*  
(Cat. no. 8412.0) Quarterly
- (13) *Consumer Price Index* (Cat. no. 6401.0) Quarterly
- (14) *Price Index of Materials Used in House Building, Six State Capital Cities and Canberra* (Cat. no. 6408.0) Quarterly
- (15) *Price Index of Materials Used in Building Other Than House Building, Six State Capital Cities and Canberra*  
(Cat. no. 6407.0) Quarterly
- (16) *House Price Indexes: Eight Capital Cities*  
(Cat. no. 6416.0) Quarterly
- (17) *Australian Demographic Statistics* (Cat. no. 3101.0) Quarterly
- (18) *Labour Force, Australia, Preliminary* (Cat. no. 6202.0) Monthly
- (19) *Job Vacancies and Overtime, Australia*  
(Cat. no. 6354.0) Quarterly
- (20) *Industrial Disputes, Australia* (Cat. no. 6321.0) Monthly
- (21) Unpublished overseas arrival and departure statistics
- (22) *Average Weekly Earnings, States and Australia*  
(Cat. no. 6302.0) Quarterly
- (23) *Wage Cost Index, Australia* (Cat. no. 6345.0) Quarterly
- (24) *Housing Finance for Owner Occupation, Australia*  
(Cat. no. 5609.0) Monthly
- (25) Unpublished statistics available from PC AUSSTATS
- (26) *Reserve Bank of Australia Bulletin*

## SELF-HELP ACCESS TO STATISTICS

- CPI INFOLINE* For current and historical Consumer Price Index data, call 1902 981 074 (call cost 75c per minute).
- DIAL-A-STATISTIC* For the latest figures for National Accounts, Balance of Payments, Labour Force, Average Weekly Earnings, Estimated Resident Population and the Consumer Price Index call 1900 986 400 (call cost 75c per minute).
- INTERNET* [www.abs.gov.au](http://www.abs.gov.au)
- LIBRARY* A range of ABS publications is available from public and tertiary libraries Australia-wide. Contact your nearest library to determine whether it has the ABS statistics you require.

## WHY NOT SUBSCRIBE?

- PHONE* +61 1300 366 323
- FAX* +61 03 9615 7848

## CONSULTANCY SERVICES

ABS offers consultancy services on a user pays basis to help you access published and unpublished data. Data that is already published and can be provided within 5 minutes is free of charge. Statistical methodological services are also available. Please contact:

<i>INQUIRIES</i>	<i>City</i>	<i>By phone</i>	<i>By fax</i>
	Canberra	02 6252 6627	02 6207 0282
	Sydney	02 9268 4611	02 9268 4668
	Melbourne	03 9615 7755	03 9615 7798
	Brisbane	07 3222 6351	07 3222 6283
	Perth	08 9360 5140	08 9360 5955
	Adelaide	08 8237 7400	08 8237 7566
	Hobart	03 6222 5800	03 6222 5995
	Darwin	08 8943 2111	08 8981 1218

*POST* Client Services, ABS, PO Box 10, Belconnen ACT 2616

*EMAIL* [client.services@abs.gov.au](mailto:client.services@abs.gov.au)



2130740009990  
ISSN 1039-8880

RRP \$17.00